

Colours

2012



DAUPHIN

T!O:
TREND OFFICE

DAUPHIN

HumanDesign® Group



Komfort mit Stil und Form. *Comfort with stylish design.*

Neben hohem Komfort, verbunden mit funktionalem Nutzen, schaffen wir mit unseren Büro- und Objektmöbeln ein ansprechendes Ambiente, das sich ganz Ihren Vorstellungen und Wünschen anpasst. So erzeugen wir an Arbeitsplätzen eine inspirierende und harmonische Atmosphäre. Auf den folgenden Seiten finden Sie dazu hochwertige Materialien und ein vielseitiges Farbprogramm, mit denen sich Ihre Einrichtungsideen einfach realisieren lassen. Wählen Sie aus einem breiten Spektrum an Textilien, Ledern, Farben und Oberflächen und unterstreichen Sie so Ihren individuellen Geschmack oder den Spirit Ihres Unternehmens. Hier finden Sie in einer breiten Farbpalette klassische Bezugstoffe, haptisch ansprechend und dennoch strapazierfähig, ebenso wie atmungsaktives und feuchtigkeitsregulierendes Netzgewebe, pflegeleichtes, schwer entflammables Kunstleder oder hochwertiges anilinfärbtes Rindsleder für noch mehr Exklusivität.

Lassen Sie sich inspirieren!

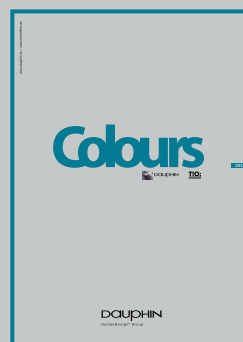
Our furniture for offices and public areas not only offers a high level of comfort and functionality but also creates attractive surroundings which entirely reflect your ideas and requirements. This enables us to bring about an inspirational, harmonious atmosphere in working environments. On the following pages, you will find high-quality materials and a variety of colours which make it easy to create exactly the look you want. Choose from a wide range of textiles, leathers, colours and surfaces – and underline the individual tastes or spirit of your company. You will find classic upholstery fabrics which are hardwearing yet pleasant to the touch as well as breathable, moisture-regulating mesh fabrics, easy-care, flame-retardant imitation leather or high-quality, aniline-dyed cowhide leather for even greater exclusivity – all available in a wide variety of colours.

Be inspired!

F. W. Dauphin
Friedrich-W. Dauphin

Elke Dauphin
Elke Dauphin

Antje Dauphin
Antje Dauphin



Colours

Bezugsstoffe und Materialien *Upholstery fabrics and materials*

Auslaufende Stoffe/ *Discontinued fabrics*

Die folgenden Stoffe sind erhältlich solange vorrätig. / *The following fabrics are available as long as stocks last.*

Comfort: E

- **6000** Graphite
- **6001** Pewter
- **6010** Tropic
- **6016** Prune
- **6020** Pacific
- **6023** Sea
- **6031** Apple
- **6032** Kiwi
- **6040** Siam
- **6042** Snow
- **6050** Sunshine

Highfield: E

- **3160** Kiwano
- **3161** Pine
- **3162** Blackberry
- **3163** Blueberry

Front : C

Zusammensetzung: 85% Wolle, 8% Polyamid,
4% Lycra, 3% Polyester
Gewicht: ca. 420g/m
Breite: 140 cm
Lichtechtheit: Note 5-7 (EN ISO 105-B02)
Reibechtheit: nass: 3-4 / trocken: 4-5
(EN ISO 105-X12)
Scheuerfestigkeit: 70.000 Touren
(Martindale; EN ISO 12947)
Brandverhalten: DIN EN 1021: Teil 1/Teil 2

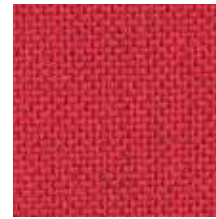
Composition: 85% Wool, 8% Polyamide,
4% Lycra, 3% Polyester
Weight: approx. 420g/m
Width: 140cm
Light fastness: value 5-7 (EN ISO 105-B02)
Fastness to rubbing: wet: 3-4 / dry: 4-5
(EN ISO 105-X12)
Abrasion resistance: 70,000 rubs
(Martindale; EN ISO 12947)
Flammability: DIN EN 1021: Part 1/Part 2



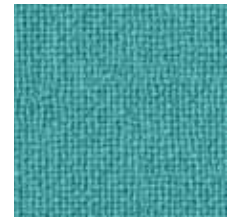
5750 Limone



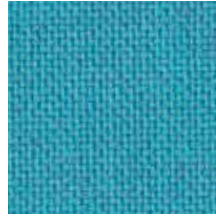
5711 Orangina



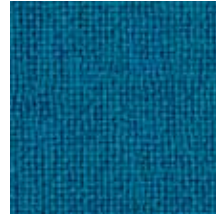
5710 Fragola



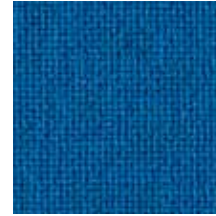
5724 Turchese



5721 Azzuro



5723 Petrolio



5720 Mare



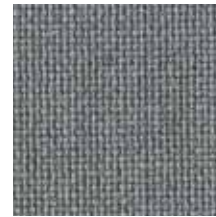
5722 Marina



5731 Erba



5730 Foresta



5701 Ciottolo



5700 Nero

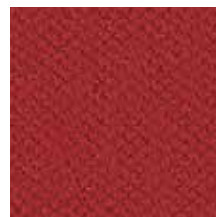
Steelcut : C

Zusammensetzung: 90% Kammgarawolle, 10% Nylon
Gewicht: ca. 880g/m
Breite: 140 cm
Lichtechtheit: Note 5-7 (EN ISO 105-B02)
Reibechtheit: nass: 4 / trocken: 4-5
Scheuerfestigkeit: 80.000 Touren
(Martindale; EN ISO 12947)
Brandverhalten: DIN EN 1021: Teil 1/2

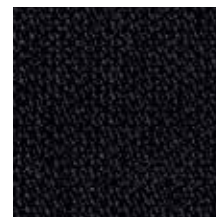
Composition: 90% Worsted wool, 10% Nylon
Weight: approx. 880g/m
Width: 140 cm
Light fastness: value 5-7 (ISO 105-B02)
Fastness to rubbing: wet: 4 / dry: 4-5
Abrasion resistance: 80,000 rubs
(Martindale; EN ISO 12947)
Flammability: DIN EN 1021: Part 1/2



5311 Quartz



5310 Jasper



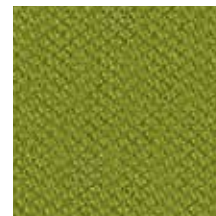
5300 Magnesite



5324 Turquoise



5323 Amethyst



5331 Calcite

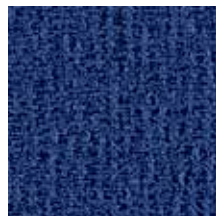
Decade : B

Speziell für hohe Beanspruchung

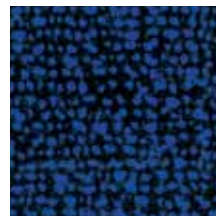
Zusammensetzung: 50% Polyamid, 33% Schurwolle,
10% Visil, 7% Viskose
Gewicht: ca. 610g/m, Breite: 140cm
Lichtechtheit: Note 6 (EN ISO 105-B02)
Reibechtheit: nass: 4 / trocken: 4
Scheuerfestigkeit: 500.000 Touren
(Martindale; EN ISO 12947)
Brandverhalten: DIN EN 1021: Teil 1/2

Especially for heavy duty

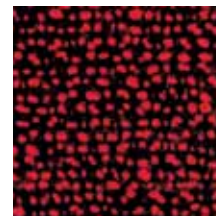
Composition: 50% polyamide, 33% virgin wool,
10% visil, 7% viscose
Weight: approx. 610g/m, Width: 140 cm
Light fastness: value 6 (ISO 105-B02)
Fastness to rubbing: wet: 4 / dry: 4
Abrasion resistance: 500,000 rubs
(Martindale; EN ISO 12947)
Flammability: DIN EN 1021: Part 1/2



4022 Perpetual



4020 Hour



4010 Minute



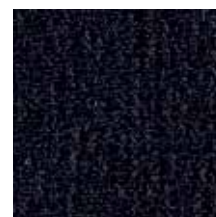
4031 Moment



4001 Era



4000 Night



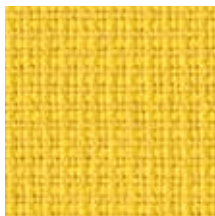
4002 Forever



Fame : B

Zusammensetzung: 95% New Zealand-Wolle, 5% Polyamid
 Gewicht: ca. 610g/m
 Breite: 140 cm
 Lichtechtheit: Note 5 (EN ISO 105-B02)
 Reibechtheit: nass: 4-5 / trocken: 4-5
 Scheuerfestigkeit: 200.000 Touren
 (Martindale; EN ISO 12947-2)
 Brandverhalten: DIN EN 1021: Teil 1/2

Composition: 95% New Zealand wool, 5% Polyamide
 Weight: approx. 610g/m
 Width: 140 cm
 Light fastness: value 5 (EN ISO 105-B02)
 Fastness to rubbing: wet: 4-5 / dry: 4-5
 Abrasion resistance: 200,000 rubs
 (Martindale; EN ISO 12947-2)
 Flammability: DIN EN 1021: Part 1/2



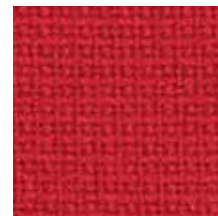
5650 Tanger



5613 Milano



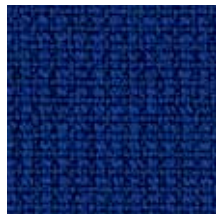
5614 Barcelona



5612 Roma



5624 Helsinki



5620 Moscow



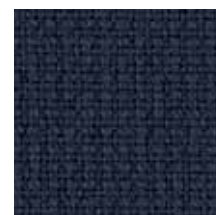
5621 Lisbon



5611 Cairo



5630 Berlin



5601 Vienna



5600 Warsaw

Stavanger : B

Zusammensetzung: 100% Trevira CS® (Polyester)
 Gewicht: ca. 406g/m, Breite: 150 cm
 Lichtechtheit: Note 5-7 (EN ISO 105-B02)
 Reibechtheit: nass: 5 / trocken: 5
 Scheuerfestigkeit: 100.000 Touren
 (Martindale; EN ISO 12947-2)
 Brandverhalten: DIN EN 1021: Teil 1/2
 NF-P 92-503/507 M1, DIN 4102, B1

Composition: 100% Trevira CS® (Polyester)
 Weight: approx. 406g/m, Width: 150 cm
 Light fastness: value 5-7 (EN ISO 105-B02)
 Fastness to rubbing: wet: 5 / dry: 5
 Abrasion resistance: 100,000 rubs
 (Martindale; EN ISO 12947-2)
 Flammability: DIN EN 1021: Part 1/2
 NF-P 92-503/507 M1, DIN 4102, B1



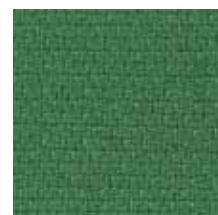
2912 Lada



2910 Bastet



2920 Ran



2930 Dea



2901 Alekto



2900 Hekate

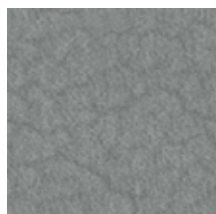
Nanovel : B

Fleck- und wasserabweisend, angenehme Haptik
 Zusammensetzung: 65% Polyester, 35% Baumwolle
 Gewicht: ca. 600 g/m, Breite: 140 cm
 Lichtechtheit: Note 5-6 (EN ISO 105-B02)
 Reibechtheit: nass: 4 / trocken: 4-5
 Scheuerfestigkeit: 50.000 Touren
 (Martindale, EN ISO 12947-2)
 Brandverhalten: DIN EN 1021: Teil 1/2

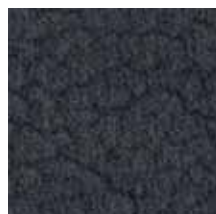
Stain- and water-repellent, soft-touch surface
 Composition: 65% polyester, 35% cotton
 Weight: approx. 600g/m, Width: 140 cm
 Light fastness: value 5-6 (EN ISO 105-B02)
 Fastness to rubbing: wet: 4 / dry: 4-5
 Abrasion resistance: 50,000 rubs
 (Martindale, EN ISO 12947-2)
 Flammability: DIN EN 1021: Part 1/2



6210 Loquat



6202 Curuba



6201 Kiwano

Palena : B

Blut-, urin- und desinfektionsmittelbeständig, angenehme Haptik

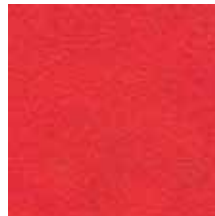
Zusammensetzung: 90% PVC-Compound – 10% PES/BW
 Gewicht: ca. 700 g/m², Breite: 137 cm
 Lichtechtheit: Note 5 (EN ISO 105-B02)
 Reibechtheit: nass: 4 / trocken: 3–4
 Scheuerfestigkeit: 50.000 Touren (Martindale; EN ISO 12947-2)
 Brandverhalten: DIN EN 1021: Teil 1/2
 NFP 503 Klasse M2, BS 5852 IS 0+1, DIN 4102 B2

Resistant to blood, urine and disinfectants, soft-touch surface

Composition: 90% PVC-Compound – 10% PES/BW
 Weight: approx. 700 g/m², Width: 137 cm
 Light fastness: value 5 (EN ISO 105-B02)
 Fastness to rubbing: wet: 4 / dry: 3–4
 Abrasion resistance: 50,000 rubs (Martindale; EN ISO 12947-2)
 Flammability: DIN EN 1021: Part 1/2
 NFP 503 class M2, BS 5852 IS 0+1, DIN 4102 B2



4940 Terracotta



4910 Rot/Red



4920 Blau/Blue



4930 Lightolive



4902 Platin



4900 Anthrazit

Palma NF : B

Blut-, urin- und desinfektionsmittelbeständig, schwer entflammbar, angenehme Haptik

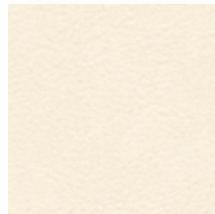
Zusammensetzung: 86% PVC-Compound – 14% BW
 Gewicht: ca. 800 g/m², Breite: 137 cm
 Lichtechtheit: Note 6 (EN ISO 105-B02)
 Reibechtheit: nass: 4 / trocken: 4–5
 Scheuerfestigkeit: 50.000 Touren (Martindale; EN ISO 12947-2)
 Brandverhalten: DIN EN 1021 Teil 1/2,
 NFP 503 Klasse M1, BS 5852 IS 0+1, Crib 5, DIN 4102 B1

Resistant to blood, urine and disinfectants, flame retardant, soft-touch surface

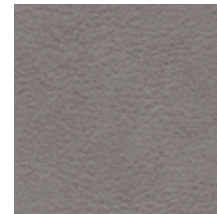
Composition: 86% PVC-Compound – 14% BW
 Weight: approx. 800 g/m², Width: 137 cm
 Light fastness: value 6 (EN ISO 105-B02)
 Fastness to rubbing: wet: 4 / dry: 4–5
 Abrasion resistance: 50,000 rubs (Martindale; EN ISO 12947-2)
 Flammability: DIN EN 1021 Part 1/2,
 NFP 503 class M1, BS 5852 IS 0+1, Crib 5, DIN 4102 B1



6702 Atoll



6703 Weiß/White



6701 Platin



6700 Schwarz/Black

Parotega NF : B

Blut-, urin- und desinfektionsmittelbeständig, schwer entflammbar, angenehme Haptik

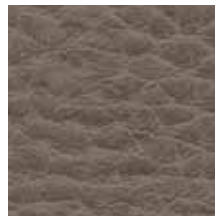
Zusammensetzung: 83% PVC-Compound – 17% BW
 Gewicht: ca. 700 g/m², Breite: 137 cm
 Lichtechtheit: Note 5 (ISO 105-B02)
 Reibechtheit: nass: 4 / trocken: 4
 Scheuerfestigkeit: 50.000 Touren (Martindale; EN ISO 12947-2)
 Brandverhalten: DIN EN 1021 Teil 1/2
 NFP 503 Klasse M1, BS 5852 IS 0+1, Crib 5, DIN 4102 B1

Resistant to blood, urine and disinfectants, flame retardant, soft-touch surface

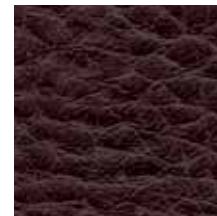
Composition: 83% PVC-Compound – 17% BW
 Weight: approx. 700 g/m², Width: 137 cm
 Light fastness: value 5 (ISO 105-B02)
 Fastness to rubbing: wet: 4 / dry: 4
 Abrasion resistance: 50,000 rubs (Martindale; EN ISO 12947-2)
 Flammability: DIN EN 1021 Part 1/2,
 NFP 503 class M1, BS 5852 IS 0+1, Crib 5, DIN 4102 B1



6723 Birke



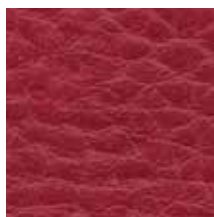
6724 Fango



6721 Schoko



6720 Schwarz/Black



6722 Kirsche

Valencia : A

Sehr robustes Kunstleder, langlebig, Blut- und urinbeständig

Zusammensetzung: 78% PVC-Compound – 22% PES
 Gewicht: ca. 700 g/m², Breite: 137 cm
 Lichtechtheit: Note 5 (EN ISO 105-B02)
 Scheuerfestigkeit: 100.000 Touren
 (Martindale; EN ISO 12947)
 Brandverhalten: DIN EN 1021 Teil 1/2, NF-P 503
 Klasse M2, DIN 4102 B2

Very strong synthetic leather, durable, blood and urine resistant

Composition: 78% PVC-Compound – 22% PES
 Weight: approx. 700 g/m², Width: 137 cm
 Light fastness: value 5 (ISO 105-B02)
 Abrasion resistance: 100,000 rubs
 (Martindale; EN ISO 12947)
 Flammability: DIN EN 1021 Part 1/2, NF-P 503
 class M2, DIN 4102 B2



3202 Rot/Red



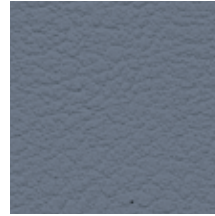
3221 Delft



3220 Marine



3205 Weiß/White



3208 Titan



3200 Schwarz/Black

Madrid : A

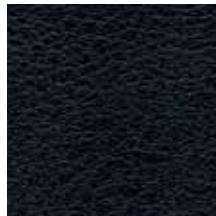
Kunstleder leitfähig

Zusammensetzung: 89% PVC-Compound – 11% PES/BW
 Gewicht: ca. 650 g/m²
 Breite: 137 cm
 Reibechtheit: nass 4 / trocken 4 (EN ISO 105-X12)
 Scheuerfestigkeit: 40.000 Touren
 (Martindale; EN ISO 5470-2)

Imitation leather conductive

Composition: 89% PVC-Compound – 11% PES/BW
 Weight: approx. 650 g/m²
 Width: 137 cm
 Fastness to rubbing: wet 4 / dry 4 (EN ISO 105-X12)
 Abrasion resistance: 40,000 rubs
 (Martindale; EN ISO 5470-2)

= leitfähig / conductive



0426[⚡] Schwarz/Black

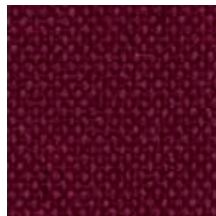
Charlotta : A

Zusammensetzung: 30% Wolle / 70% Polypropylen
 Gewicht: ca. 470 g/m
 Breite: 130 cm
 Lichtechtheit: Note 5 (EN ISO 105-B02)
 Reibechtheit: nass: 4 / trocken: 4
 Scheuerfestigkeit: 90.000 Touren
 (Martindale; EN ISO 12947)
 Brandverhalten: DIN EN 1021: Teil 1/2

Composition: 30% Wool / 70% Polypropylene
 Weight: approx. 470 g/m
 Width: 130 cm
 Light fastness: value 5 (EN ISO 105-B02)
 Fastness to rubbing: wet: 4 / dry: 4
 Abrasion resistance: 90,000 rubs
 (Martindale; EN ISO 12947)
 Flammability: DIN EN 1021: Part 1/2



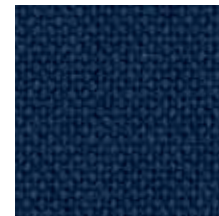
= leitfähig / conductive



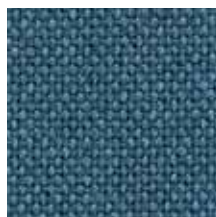
0521 Bordeaux



0504 (0404[⚡])
Corinth



0502 (0402[⚡])
Indigo



0508 Aqua



0516 Charcoal



0511 (0411[⚡])
Black

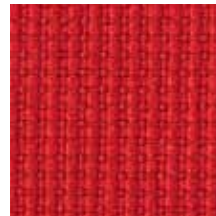
Relax : A

Zusammensetzung: 100% Trevira CS® (Polyester)
 Gewicht: ca. 450g/m, Breite: 140cm
 Lichtechtheit: Note 6 (EN ISO 105-B02)
 Pilling: Note 5 (EN ISO 12945/2)
 Reibechtheit: nass: 4-5 / trocken: 4-5 (EN ISO 105-X12)
 Scheuerfestigkeit: 100.000 Touren
 (Martindale; EN ISO 12947)
 Brandverhalten: DIN EN 1021: Teil 1/2,
 DIN 4102 B1, NF-P 92-503/504 M1

Composition: 100% Trevira CS® (Polyester)
 Weight: approx. 450g/m, Width: 140cm
 Light fastness: value 6 (EN ISO 105-B02)
 Pilling: value 5 (EN ISO 12945/2)
 Fastness to rubbing: wet: 4-5 / dry: 4-5 (EN ISO 105-X12)
 Abrasion resistance: 100,000 rubs
 (Martindale, EN ISO 12947)
 Flammability: DIN EN 1021: Part 1/2,
 DIN 4102 B1, NF-P 92-503/504 M1



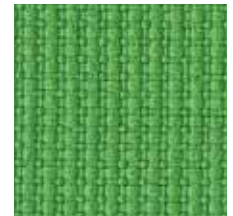
2711 Sunflower



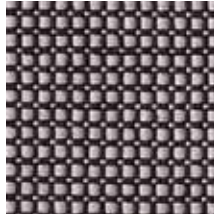
2710 Cherry



2720 Butterfly



2730 Nature



2702 Piano



2701 Granite



2700 Nighttime

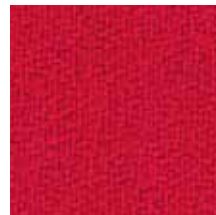
King : A

Zusammensetzung: 100% Trevira CS® (Polyester)
 Gewicht: ca. 420g/m
 Breite: 140cm
 Lichtechtheit: 6 Note (EN ISO 105-B02)
 Reibechtheit: nass: 4-5 / trocken: 4-5
 Scheuerfestigkeit: 100.000 Touren
 (Martindale; EN ISO 12947)
 Brandverhalten: DIN EN 1021: Teil 1/2,
 DIN 4102 B1, NF-P 92-503/504 M1

Composition: 100% Trevira CS® (Polyester)
 Weight: approx. 420g/m
 Width: 140cm
 Light fastness: value 6 (EN ISO 105-B02)
 Fastness to rubbing: wet: 4-5 / dry: 4-5
 Abrasion resistance: 100,000 rubs
 (Martindale; EN ISO 12947)
 Flammability: DIN EN 1021: Part 1/2,
 DIN 4102 B1, NF-P 92-503/504 M1



2311 Balbi



0235 Etna



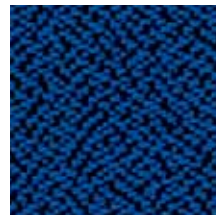
0265 Vesuv



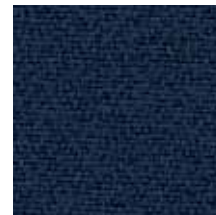
0268 Nil



0232 Aquilia



0231 Spika



0266 Tigris



2313 Firenze



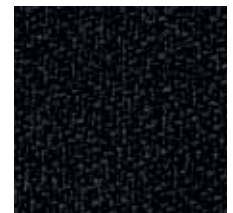
2331 Riva



0234 Goya



0237 Dema

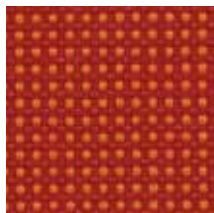


0238 Nigra

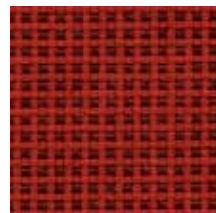
King Plus : A

Zusammensetzung: 100% Trevira CS® (Polyester)
 Gewicht: ca. 365g/m, Breite: 140cm
 Lichtechtheit: Note 6 (EN ISO 105-B02)
 Reibechtheit: nass: 4-5 / trocken: 4-5
 Scheuerfestigkeit: 80.000 Touren
 (Martindale; EN ISO 12947)
 Brandverhalten: DIN EN 1021: Teil 1/2,
 DIN 4102 B1, NF-P 92-503/504 M1

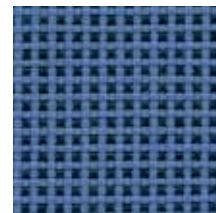
Composition: 100% Trevira CS® (Polyester)
 Weight: approx. 365g/m, Width: 140cm
 Light fastness: value 6 (ISO 105-B02)
 Fastness to rubbing: wet: 4-5 / dry: 4-5
 Abrasion resistance: 80,000 rubs
 (Martindale; EN ISO 12947)
 Flammability: DIN EN 1021: Part 1/2,
 DIN 4102 B1, NF-P 92-503/504 M1



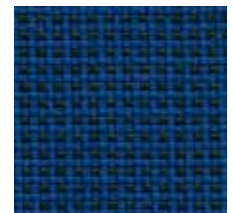
2611 Lava



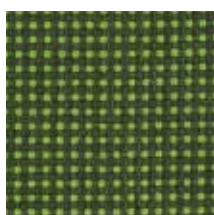
2610 Fire



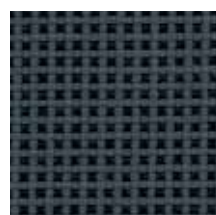
2621 Cielo



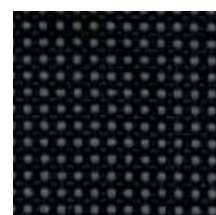
2620 Fjord



2632 Meadow



2601 Dust



2600 Vulcano

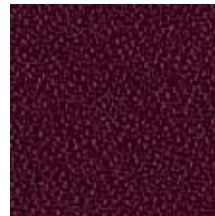
Polo:P

Zusammensetzung: 100% Polyester
 Gewicht: ca. 350g/m
 Breite: 140cm
 Lichtechtheit: Note 6 (EN ISO 105-B02)
 Reibechtheit: nass: 4-5 / trocken: 4-5
 Scheuerfestigkeit: 100.000 Touren
 (Martindale; EN ISO 12947)
 Brandverhalten: DIN EN 1021: Teil 1/2

Composition: 100% Polyester
 Weight: approx. 350g/m
 Width: 140cm
 Light fastness: value 6 (EN ISO 105-B02)
 Fastness to rubbing: wet: 4-5 / dry: 4-5
 Abrasion resistance: 100,000 rubs
 (Martindale; EN ISO 12947)
 Flammability: DIN EN 1021: Part 1/2



4610 Liguria



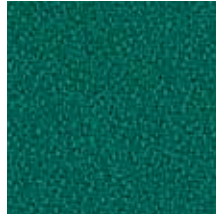
4611 Piemonte



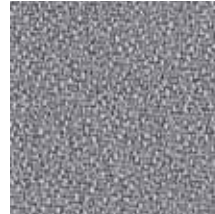
4622 Milano



4621 Sicilia



4630 Toscana



4602 Sardegna



4601 Calabria

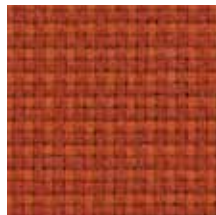


4600 Veneto

Chateau Plus : P

Zusammensetzung: 100% Perfortex® Plus
 Gewicht: ca. 350g/m
 Breite: 140cm
 Lichtechtheit: Note 6
 Reibechtheit: nass: 4 / trocken: 4
 Scheuerfestigkeit: 50.000 Touren
 (Martindale; EN ISO 12947)
 Brandverhalten: DIN EN 1021: Teil 1/2
 NF-P 92-503-M1, CSE-RF 3/77-Klasse 1,
 DIN 4102, B1

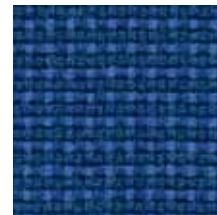
Composition: 100% Perfortex® Plus
 Weight: approx. 350g/m
 Width: 140cm
 Light fastness: value 6
 Fastness to rubbing: wet: 4 / dry: 4
 Abrasion resistance: 50,000 rubs
 (Martindale; EN ISO 12947)
 Flammability: DIN EN 1021: Part 1/2
 NF-P 92-503-M1, CSE-RF 3/77-Class 1,
 DIN 4102, B1



2811 Noizay



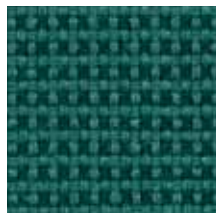
2810 Dollard



2821 Chinon



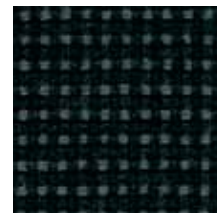
2820 Bonpas



2830 Avrilly



2840 Medoc



2800 Hazeville

Lavalina : F

Feinstes, naturbelassenes Nappaleder. Anilingefärbtes Rindsoberleder der Spitzenklasse. Mit natürlichen Ölen behandelt, tuchweicher Griff, atmungsaktiv, hautsympathisch, feuchtigkeitsregulierend. Wasserlösliche Farben ohne chemische Lösungsmittel.

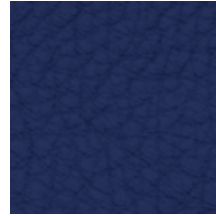
Zusammensetzung: Premium Echt-Leder.
Lichtechtheit: Note 4 (EN ISO 105-B02)
Reibechtheit: nass: 4 / trocken: 3-4 (EN ISO 11640)
Brandverhalten: DIN EN 1021: Teil 1/2

The finest natural Nappa leather top quality. Aniline dyed cowhide leather. Treated with natural oils, fabric-soft touch, breathable, dermatologically safe, moisture control. Water-soluble dyes without solvents.

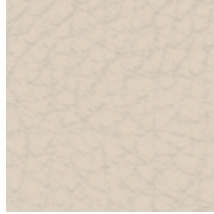
Composition: Premium leather.
Light fastness: value 4 (EN ISO 105-B02)
Fastness to rubbing: wet: 4 / dry: 3-4 (EN ISO 11640)
Flammability: DIN EN 1021: Part 1/2



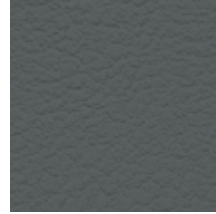
7014 Mondrian



7022 Royal



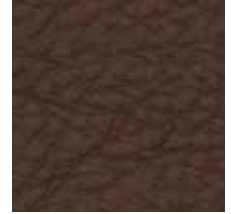
7046 Crema



7001 Anthracite



0700 Black



7040 Cacao

Leder : E

Anilingefärbtes leicht mit Pigmentfarbe abgedecktes Rindsoberleder, sehr strapazierfähig, vollnarbig.

Zusammensetzung: Nappaleder pigmentiert (Semi-Anilinleder),
Lichtechtheit: Note 3 (EN ISO 105-B02)
Reibechtheit: nass: 4-5 / trocken: 4-5 (EN ISO 11640)
Brandverhalten: DIN EN 1021: Teil 1/2

Aniline dyed cowhide leather with light pigment dyeing, very hard wearing, full-grain.

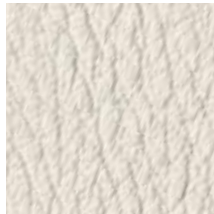
Composition: Pigmented Nappa leather (semianiline leather)
Light fastness: value 3 (EN ISO 105-B02)
Fastness to rubbing: wet: 4-5 / dry: 4-5 (EN ISO 11640)
Flammability: DIN EN 1021: Part 1/2



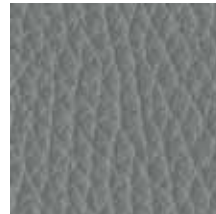
7123 Zirkon



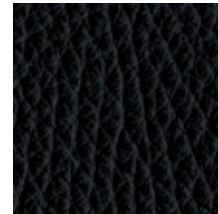
7141 Dravit



7145 Diamond



7101 Beryll



0180 Onyx

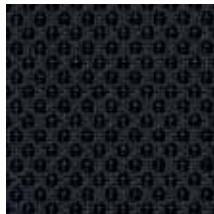
Web M

Preisgruppe je nach Sitzpolsterung.

Web **M**: 100% Polyester
ca. 510 g/lfm.
70.000 Scheuertouren
Semitransparentes 3-D Netzgewebe,
atmungsaktiv und feuchtigkeitsregulierend.
Web **M** nur für Rückenlehne
my-self mesh.

Price depending on upholstery of the seat.

Web **M**: 100% Polyester
approx. 510 g/lfm.
70,000 Rubs
Semi-transparent mesh fabric,
breathable and moisture regulating.
Web **M** only for backrest
my-self mesh



Web **M**
4290 Schwarz/Black



Web **M**
4291 Dunkelgrau/
Dark Grey



Web **M**
4292 Dunkelblau/
Dark Blue



Web **M**
4293 Rot/Red

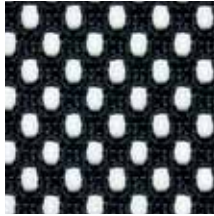
Web A

Preisgruppe je nach Sitzpolsterung.

Web A: 100% Polyester
ca. 510 g/lfm.
100.000 Scheuertouren
Netzgewebe Web A für Rückenlehnen
Join Me, Teo 2 und dat-o

Price depending on upholstery of the seat.

Web A: 100% Polyester
approx. 510 g/lfm.
100,000 Rubs
Mesh fabric Web A for backrests
Join Me, Teo 2 and dat-o



Web A
0465 Trampoline



Web A*
0466 Matrix
* nur für dat-o/
only for dat-o

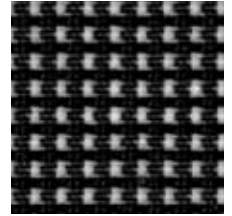
Web E

Preisgruppe je nach Sitzpolsterung.

Web E: 75% Polyester/25% Polyamid
ca. 370g/lfm.
40.000 Scheuertouren
Netzgewebe Web E für Rückenlehnen
HighWay

Price depending on upholstery of the seat.

Web E: 75% Polyester/25% Polyamide
approx. 370g/lfm.
40,000 Rubs
Mesh fabric Web E for backrests
HighWay



Web E
0441 Route

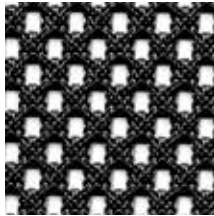
Web J

Preisgruppe je nach Sitzpolsterung.

Web J: 100% Polyester
ca. 745 g/lfm.
100.000 Scheuertouren
Netzgewebe Web J für Rückenlehnen
TakeOver und sim-o mesh

Price depending on upholstery of the seat.

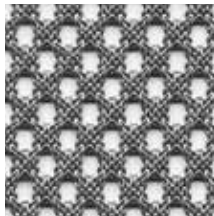
Web J: 100% Polyester
approx. 745 g/lfm.
100,000 Rubs
Mesh fabric Web J for backrests
TakeOver and sim-o mesh



Web J
4249 Joy



Web J
4248 Pleasure



Web J
4247 Gladness

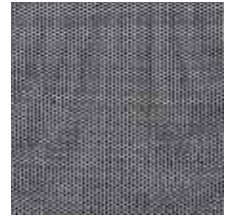
Web G

Preisgruppe je nach Sitzpolsterung.

Web G: 100% Trevira CS® (Polyester)
Strickgewebe Web G für Rückenlehnen
Open End

Price depending on upholstery of the seat.

Web G: 100% Trevira CS® (Polyester)
Knit fabric Web G for backrests
Open End



Web G
0445 Open

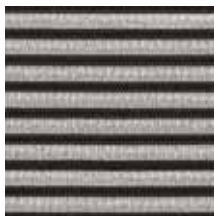
Web K

Preisgruppe je nach Sitzpolsterung.

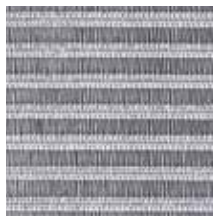
Web K: 100% Polyester
Netzgewebe Web K für Rückenlehnen
Lordo

Price depending on upholstery of the seat.

Web K: 100% Polyester
Mesh fabric Web K for backrests
Lordo



Web K
4310 Schwarz/Black



Web K
4312 Lichtgrau/
Lightgrey

Web L

Preisgruppe je nach Sitzpolsterung.

Web L: 100% Polyester
Netzgewebe,
Web L für Rückenlehne
Shape mesh.

Price depending on upholstery of the seat.

Web L: 100% Polyester
Mesh fabric,
Web L for backrest
Shape mesh



Web L
4330 Schwarz/Black

Open End

Kunststoff-Farben

Plastic colours



Code 40
Blau/Blue



Code 08
Rot/Red



Code 42
Weiß/White



Code 06
Schwarz/Black



Code 41
Anthrazit/Anthracite

Eddy

Kunststoff-Farben

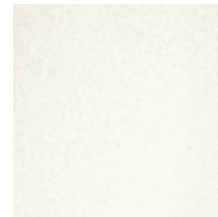
Plastic colours



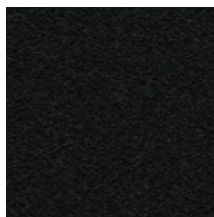
Code 09
Blau/Blue



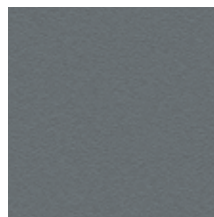
Code 08
Rot/Red



Code 42
Weiß/White



Code 06
Schwarz/Black



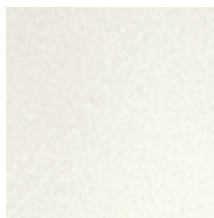
Code 07
Grau/Grey

Join Me , Previo

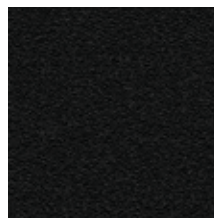
Kunststoff-Farben

Plastic colours

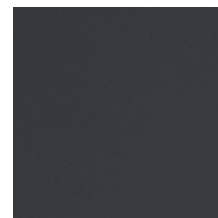
*Nur für **Join Me**/ *only for **Join Me**



Code 42
Weiß/White



Code 06
Schwarz/Black



Code 41*
Anthrazit/Anthracite

Ecco!

Kunststoff-Farben

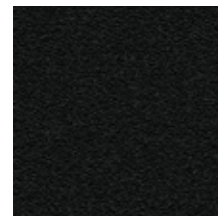
Plastic colours



Code 19
Ultramarin/Navy



Code 18
Rubinrot/Ruby-red

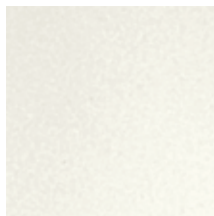


Code 06
Schwarz/Black

mant-o

Kunststoff-Farben

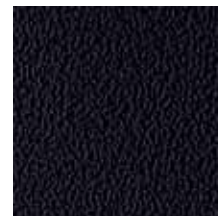
Plastic colours



Code 42
Weiß/White



Code 40
Dunkelblau/Dark blue

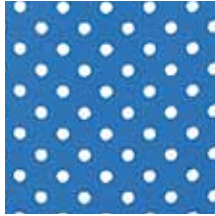


Code 06
Schwarz/Black

Sento

Lochblech-Farben

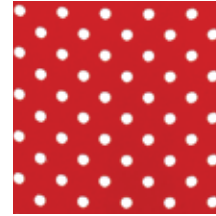
Perforated metal plate colours



Code 47
Blau/Blue



Code 04
Silber/Silver



Code 08
Rot/Red



Code 06
Schwarz/Black

Basis, Bobo, Enzo, Open End, Sento, Siamo

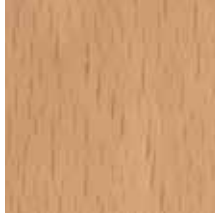
Geteilte Garnitur/Split shell

Buche natur oder Buche gebeizt (**Wasserbeize**)
Standard: Buche natur (0150)
Aufpreise für Beiztöne lt. Preisliste

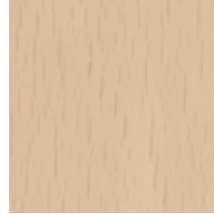
Natural beech or stained beech (**water stained**)
Standard : natural beechwood (0150)
Extra charge for special shades, see price list

Edelfurnier/Fine veneer

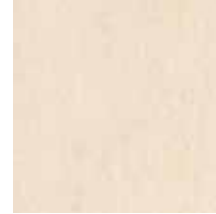
*nur für **Siamo**/*only for **Siamo**



0150
Buche natur/
Natural beechwood



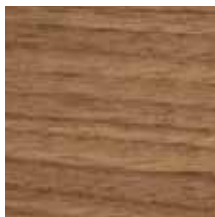
0118
Buche ahorn gebeizt/
Maple stained beech



0121
Buche weiß gebeizt/
White stained beech



0129
Buche schwarz gebeizt/
Black stained beech



0110*
Nussbaum natur, querfurniert
(Edelfurnier), Kante Buche
natur/Natural walnut, cross-
wise-veneered (fine veneer),
natural-beech edge

Amico, Siamo

Ganzschale/Full shell

Buche natur oder Laminat
Standard: Buche natur (0150)
Aufpreise für Laminat lt. Preisliste

Natural beech or laminate
Standard : natural beechwood (0150)
Extra charge for laminates, see price list

nicht für **Amico extra/**not for **Amico extra**

Edelfurnier/Fine veneer

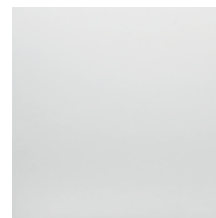
*nur für **Siamo**/*only for **Siamo**



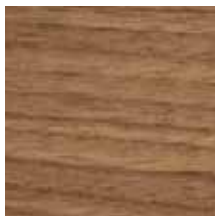
0150
Buche natur/
Natural beechwood



0188**
Laminat Ahorn, Kante Buche
natur/Maple laminate,
natural-beech edge



0190**
Laminat weiß, Kante Buche
natur/White laminate,
natural-beech edge



0110*
Nussbaum natur, querfurniert
(Edelfurnier), Kante Buche
natur/Natural walnut, cross-
wise-veneered (fine veneer),
natural-beech edge

Enzo, Join Me nesting table

Plenar 2

Tischplatten

Tabletops



0891
Melamin hellgrau, Kante ABS hellgrau/*Light grey melamine, light grey ABS edge*



0875
Melamin weiss, Kante ABS weiss/*White melamine, white ABS edge*



0885
Buche Dekor, Kante ABS Buche/Beechwood finish, beech ABS edge



0869
Ahorn Dekor, Kante ABS Ahorn/Maple finish, maple ABS edge



0888
Buche-Echtholz furnier, Kante Buche Echtholz/*Genuine beech veneer, genuine beech edge*



0887
Platte und Kante Buche-Echtholz furnier, ahorn gebeizt/*Top and edge genuine beech veneer, maple stained*

Join Me folding table

Tischplatten

Tabletops



0160
Aluminium-Platte, silber-eloxiert/*Aluminium table top, anodised silver*



0165
Aluminium-Platte, Einlage Melamin silber, Kante Aluminium/*Aluminium table top, silver melamine insert, aluminium edge*

Dolphin

Tischplatten

Tabletops



0931
HPL-Platte schwarz, Kante schwarz/*black HPL table top, black edge*



0915
MDF Melamin-Platte schwarz, Kante schwarz/*MDF melamine table top, black edge*

Ecco!

Tischplatten

Tabletops



0910
HPL-Platte hellgrau gesprenkelt, Kante schwarz/Light grey speckled HPL table top, black edge



0920
HPL-Platte silber, Kante schwarz/Silver HPL table top, black edge



0930
wie 0920, jedoch mit 4 durchgehenden Alu-Einlagen (Alucompact®)/as 0920 but with 4 continuous aluminium inserts (Alucompact®)

backGround, Bobo

Tischplatten

Für Bobo auch Holzplatten erhältlich, Oberflächenauswahl Holz (siehe Seite 13)

Tabletops

For Bobo also wooden tops available, surface finishes Wood (see page 13)



0998
Satiniertes Sicherheitsglas/
Satin-finish safety glass
(ESG/DIN 1249)

Aspetta

Tischplatten

Tabletops



0986
Acrylgias Crystal Clear/
Acrylic glass Crystal Clear



www.dauphin-group.com
www.dauphin.de / www.trendoffice.de

Vertrieb/Distribution:

Dauphin HumanDesign® Group GmbH & Co. KG Espanstraße 36 D 91238 Offenhausen **Tel.** +49 (9158) 17-700 **E-Mail** info@dauphin-group.com

Hersteller/Manufacturer:

Bürositzmöbelfabrik Friedrich-W. Dauphin GmbH & Co. Espanstraße 29 D 91238 Offenhausen +49 (9158) 17-0 info@dauphin.de

Dauphin HumanDesign® Center national:

Dauphin HumanDesign® Center Berlin	Wittestraße 30c	D 13509 Berlin	+49 (30) 43 55 76-620	dhdc.berlin@dauphin.de
Dauphin HumanDesign® Center Dresden	An der Flutrinne 12a	D 01139 Dresden	+49 (351) 795 26 64-630	dhdc.dresden@dauphin.de
Dauphin HumanDesign® Center Frankfurt/Offenbach	Strahlenbergerstraße 110	D 63067 Offenbach	+49 (69) 98 55 82 88-650	dhdc.frankfurt@dauphin.de
Dauphin HumanDesign® Center Hamburg	Ausschläger Billdeich 48	D 20539 Hamburg	+49 (40) 78 07 48-600	dhdc.hamburg@dauphin.de
Dauphin HumanDesign® Center Hannover	Podbielskistraße 342	D 30655 Hannover	+49 (511) 524 87 59-610	dhdc.hannover@dauphin.de
Dauphin HumanDesign® Center Karlsruhe	Printzstraße 13	D 76139 Karlsruhe	+49 (721) 6 25 21-20	dhdc.karlsruhe@dauphin.de
Dauphin HumanDesign® Center Köln/Hürth	Kalscheurener Straße 19a	D 50354 Hürth-Efferen	+49 (2233) 2 08 90-640	dhdc.koeln@dauphin.de
Dauphin HumanDesign® Center München	Zielstattstraße 44	D 81379 München	+49 (89) 499 49 111	dhdc.muenchen@dauphin.de
Dauphin HumanDesign® Center Offenhausen	Espanstraße 36	D 91238 Offenhausen	+49 (9158) 17-421	dhdc.offenhausen@dauphin.de

Dauphin HumanDesign® Center international:

Dauphin HumanDesign® Australia Pty. Ltd.	2 Maas Street	AUS 2099 Cromer, NSW	+61 (410) 47 56 12	dirk.woywod@dauphin.com.au
Dauphin HumanDesign® Belgium NV/SA.	Terbekehofdreef 46	B 2610 Antwerpen Wilrijk	+32 (3) 887 78 50	info@dauphin-nv-sa.be
Dauphin HumanDesign® AG	Kirschgartenstrasse 7	CH 4051 Basel	+41 (61) 283 80 0-0	info@dauphin.ch
Dauphin Scandinavia A/S	Frederikssundsvej 272	DK 2700 Kopenhagen/Brønshøj	+45 44 53 70 53	info@dauphin.dk
Dauphin Scandinavia A/S (Showroom)	Barnängsgatan 46C	S 116 48 Stockholm	+46 (708) 75 75 53	info@dauphin.dk
Dauphin France S. A.	6, Allée du Parc de Garlande	F 92220 Paris/Bagneux	+33 (1) 46 54-1590	info@dauphin-france.com
Dauphin HumanDesign® UK Limited	11 Northburgh Street, Clerkenwell	GB London EC1V 0AH	+44 (207) 324 62 10	info@dauphinuk.com
Dauphin Italia S.r.l.	Via Gaetano Crespi 12	I 20134 Milano	+39 (02) 76 01 83 94	info@dauphin.it
Dauphin HumanDesign® B.V.	Staalweg 1-3	NL 4104 AS Culemborg	+31 (345) 53 32 92	info@dauphin.nl
Dauphin North America	300 Myrtle Avenue	US 07005 Boonton, New Jersey	+1 (800) 631 11 86	inquire@dauphin.com
Dauphin North America Chicago (Showroom)	393 Merchandise Mart	US Chicago, IL 60654	+1 (312) 467 02 12	aliza.ameer@dauphin.com
Dauphin North America New York (Showroom)	138 W 25th Street	US New York, NY 10001	+1 (212) 302 43 31	aliza.ameer@dauphin.com
Dauphin Office Seating S.A. (Pty.) Ltd.	62 Hume Road, Dunkeld	ZA 2196 Johannesburg	+27 (11) 447 98 88	info@dauphin.co.za
Dauphin Office Seating S.A. (Showroom)	Black River Park, Fir Street Observatory	ZA 7925 Cape Town	+27 (21) 448 36 82	info@dauphin.co.za

Ihr Fachhändler/Your stockist